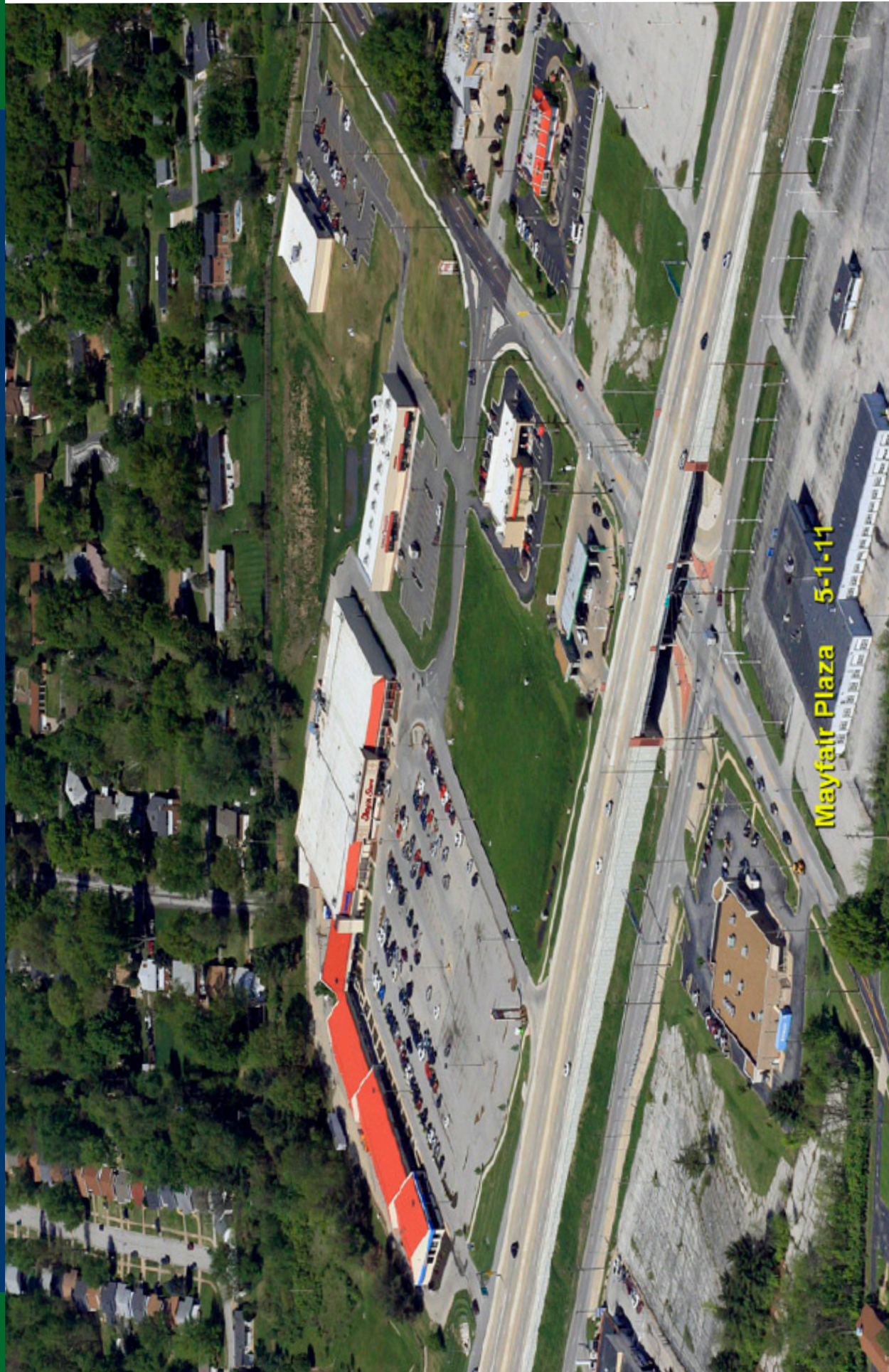


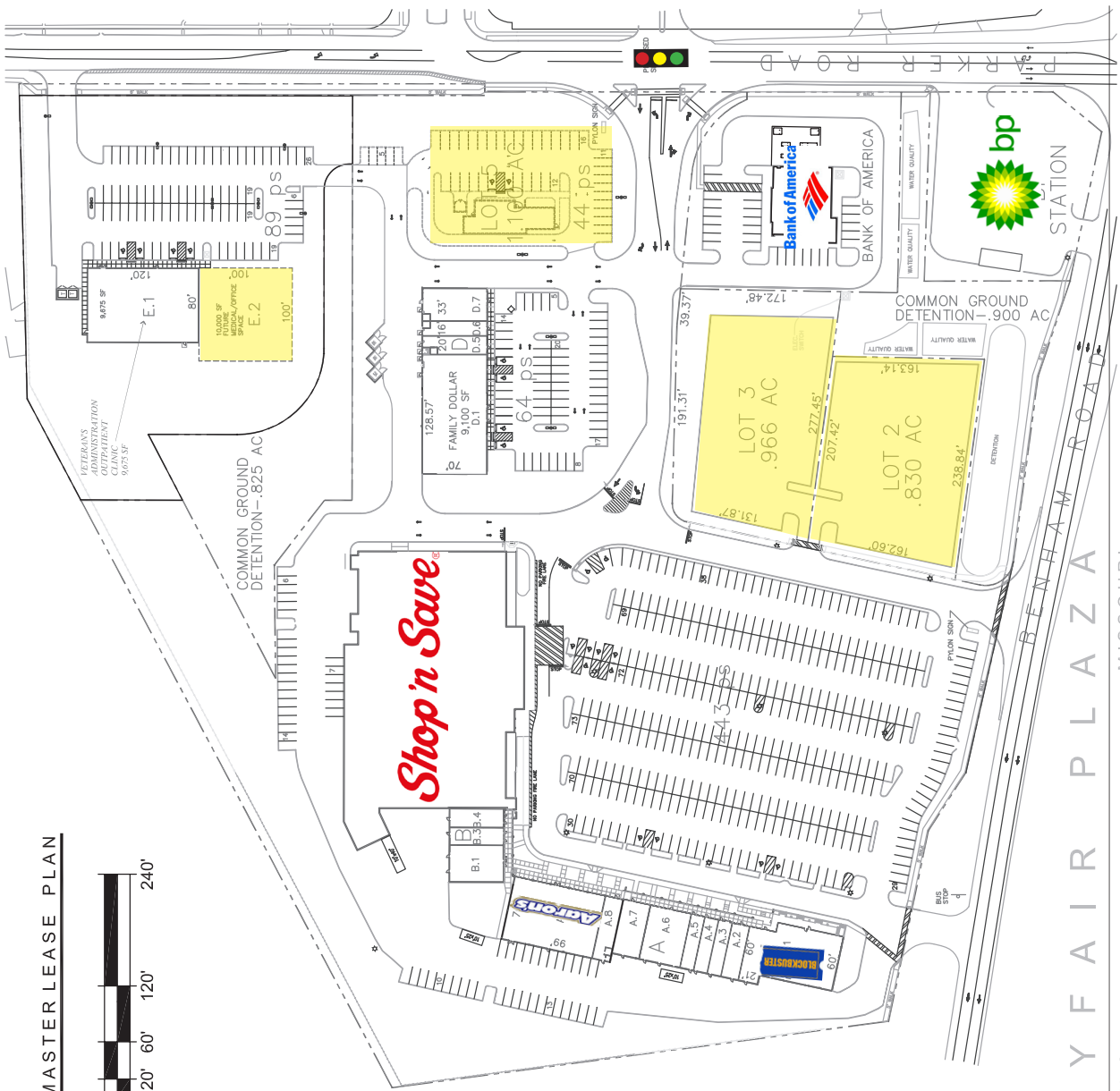
Mayfair Plaza



Koman Properties announces its redevelopment of Mayfair Plaza located at the southwest corner of Highway 367 and Parker Road in St. Louis County, Missouri. This newly remodeled center offers retailers and restaurants excellent visibility and access to the newly completed Highway 367.

FLORISSANT, MISSOURI

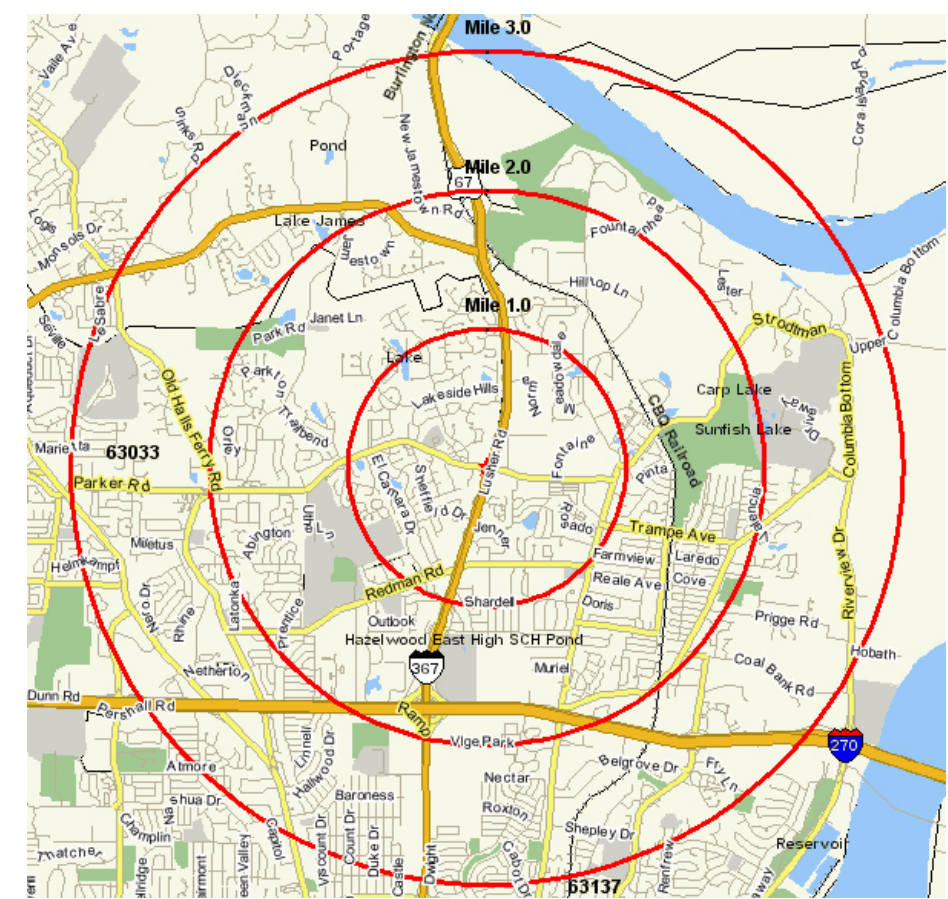




PROJECT DATA

AREA	21.89 AC
BUILDING AREA	22,633 S.F.
A RETAIL	6,019 S.F.
A.1 BLOCKBUSTER	20x60
A.2 CHECK & GO	1,200 S.F.
A.3 JACKSON HEWITT	15x60
A.4 GEOFFREY'S HAIR SALON	900 S.F.
A.5 MAY'S NAILS	15x60
A.6 KING'S BEAUTY	900 S.F.
A.7 ST. LOUIS CO. - DOH	2,700 S.F.
A.8 PHONE STOP	1,800 S.F.
A.9 AARONS	1,310 S.F.
	6,904 S.F.
B RETAIL	4,800 S.F.
B.1 CITI FINANCIAL	2,400 S.F.
B.3 PRECIOUS THOUGHTS COPY	40x60
B.4 BRADFORD INSURANCE	1,200 S.F.
	20x60
C SHOP - N - SAVE	50,583 S.F.
D FUTURE RETAIL	13,930 S.F.
D.1 FAMILY DOLLAR	9,100 S.F.
D.5 LITTLE CAESAR'S PIZZA	20x70
D.6 CHINA KING	1,400 S.F.
D.7 AVAILABLE	1,120 S.F.
	16x70
	33x70
E.1 VA OUTPATIENT CLINIC	9,675 S.F.
E.2 FUTURE MEDICAL/OFFICE	10,000 S.F.
	120x80
	100x100
SHOPPING CENTER TOTAL:	111,621 S.F.
LOT 2 - AVAILABLE OUTLOT	.830AC
LOT 3 - AVAILABLE OUTLOT	.966AC
LOT 4 - BANK OF AMERICA (SOLD)	1,064AC
LOT 5 - AVAILABLE OUTLOT	1,100AC

ST. LOUIS, MISSOURI
05-114 5-04-11
MAYFAIR PLAZA PLP 33



Development Description

Location:	Highway 367 & Parker Road St. Louis County, MO		
Site:	Outlots Available Retail Space- 1,400-14,000 square feet Office/Medical- Up to 10,000 square feet		
Traffic:	Highway 367- 38,158 VPD Parker Road- 11,410 VPD		
Anchor:	Shop 'n Save, Blockbuster, Family Dollar		
Area Retailers:	McDonald's, Walgreens		
	Population	Number of Households	Median Income
2 mile	33,843	12,800	\$56,015
4 mile	104,001	39,794	\$50,907
6 mile	220,206	83,856	\$49,711